

BWR (LPRM Dry Tube) Inspection Fixture



Innovative features designed to cut inspection time in half

Industry Issue

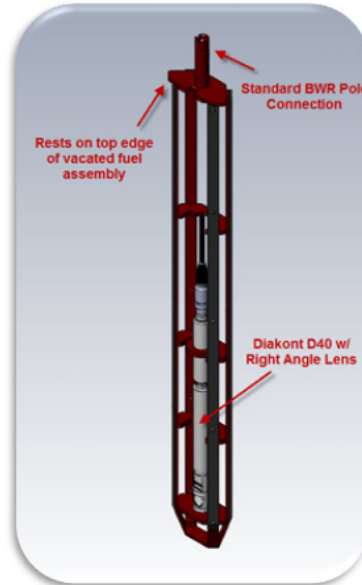
Inspection of the in-core instrumentation locations in boiling water reactors is typically performed by manual In-Vessel Visual Inspection (IVVI). Manual inspection is time-consuming, expends too much dose, and may not provide the stability necessary for such an inspection. It also requires constant bridge support and affects over-the-core bridge time. Existing manual methods require removal of up to eight fuel assemblies during shuffle one to complete the exam.

An Innovative Solution

AREVA developed an automated solution to deliver accurate, efficient, and quality exams to reduce the over-cores schedule. This new solution increases efficiencies by reducing the number of fuel assemblies that require removal while providing a stable platform to speed up the exam window compared to the manual technique. The quality of the exam is industry-recognized through use of the Diakont D-40 camera and tool positioning platform. Delivery of the tooling is simplified by utilizing a standard BWR pole fitting, significantly reducing over-the-core bridge support.

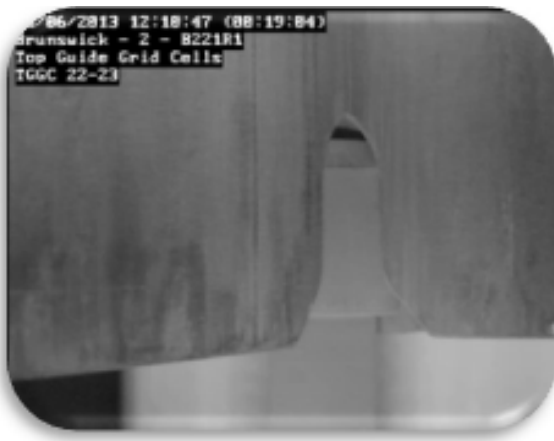
Keeping Pace with Today's Plant Requirements

Today's plants need a more efficient solution to complete their internal inspections in a timely manner. AREVA continues to innovate its processes and tooling to deliver that commitment to its customer. With this new tooling, the dry tube inspection window has been reduced to approximately 30 minutes per instrument.



Features and Benefits

- Designed with hard stops to assure fixture is indexed, gaining maximum exam efficiency
- Diakont D-40 camera for clear and precise images
- Reduces amount of over-the-core bridge support
- Simple, lightweight, FME designed, and effective
- Successfully deployed at multiple BWR utilities
- Fewer fuel assemblies need removed to support the inspections



AREVA Inc.

155 Mill Ridge Rd., Lynchburg, VA 24502

For more information, contact

Dennis Clay

Manager BWR Solutions Initiatives

Dennis.Clay@areva.com

434.832.3811- Office 434.942.8062- Cell

Adam Zulauf

Manager of IVVI, BWR Services

Adam.Zulauf@areva.com

434.832.3534 - Office 434.221.2037- Cell

Mertis Angel-Clevenger

Business Manager, BWR Services

Mertis.Clevenger@areva.com

434.832.4662 - Office 434.386.1254 - Cell

or your VP, Key Accounts:

Tel: 704.805.2305 – Fax: 434.382.5629

regional.manager@areva.com

www.us.areva.com

The data and information contained herein are provided solely for illustration and informational purposes and create no legal obligations by AREVA. None of the information or data is intended by AREVA to be a representation or a warranty of any kind, expressed or implied, and AREVA assumes no liability for the use of or reliance on any information or data disclosed in this document. © 2016 AREVA Inc. All rights reserved.