

UltraCheck[®] C System

Advanced Non-Intrusive Diagnostics for Check Valves

AREVA's UltraCheck[®] C non-intrusive safety-related diagnostic and monitoring system efficiently tests and analyzes check valves. This proven platform quickly determines overall operating performance for all types of check valves that transport liquids, gases or steam.

Employing innovative acoustic, magnetic and ultrasonic technologies, UltraCheck C detects numerous check valve problems, including a stuck or missing disk, backstop tapping, seat tapping, disk flutter, disk stud pin wear, hinge pin wear and seat leakage. Using acoustic technology, accelerometers detect impacts, rubs, flow cavitation, pump/motor starts and seat leakage.

This data, used in conjunction with magnetics and/or ultrasonics, non-intrusively reveals disk movement. Moreover, the system comprehensively verifies correct check valve operation and allows quick evaluation of problems.

Valve Types

- Swing
- Tilting disk
- Duo-disk
- Lift
- Nozzle

Sensory Capabilities (8-Channel Input)

- Acoustics (4)
- Magnetics (2)
- Ultrasonics (2)



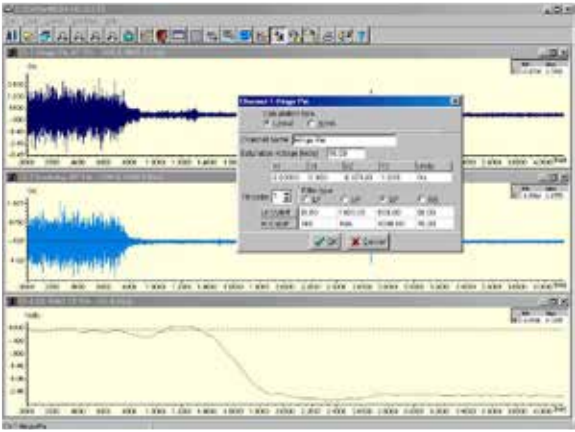
The UltraCheck C system utilizes a laptop computer and features our innovative Hardware Interface Module (HIM).

Software

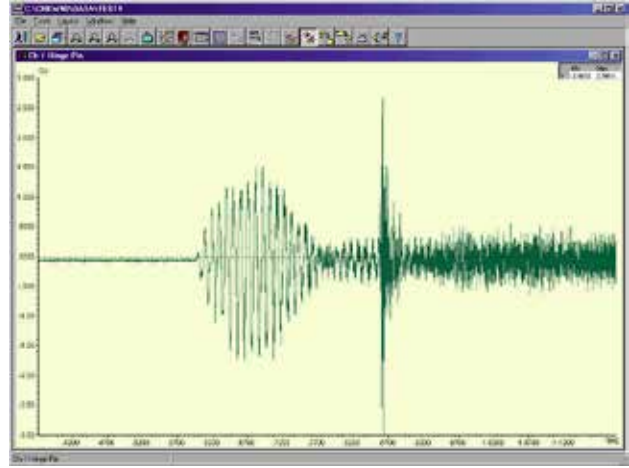
- MS Windows OS XP, 7, 10
- User-selectable sampling rates
- Sound output
- Trace overlay for trending
- Digital filtering using slider controls
- Disk opening angle/angular speed calculations
- Network compatible

Operating Modes

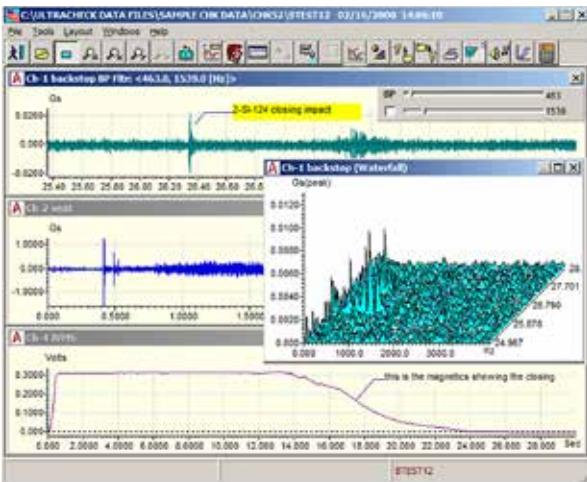
- Trigger start (user-selectable)
- Manual
- Real-time monitoring in time and frequency domains



The Universal Signal Analysis (USA) software includes such signal processing techniques as Digital Filtering (shown here) and Fast Fourier Transforms (FFT), which makes data interpretation easier.



Zoomed views of data are among those analysis functions that aid in determining valve conditions.



The "waterfall" is a three-dimensional display plotting frequency versus amplitude versus time revealing opening, steady state and closing events through the test.

Features and Benefits

- Completely non-intrusive
- Identify check valve problems/events
- Prevent unnecessary and costly valve disassembly
- Lower repair costs by focusing only on valves that require maintenance
- Lightweight
- User-friendly software
- USB interface
- Cable lengths up to 200 feet



Scan to view our parts on the web:
www.us.aveva.com/cisweb

AREVA Inc.

To learn more, contact:

Lew McKeague

Manager, Business Operations and Product Development
 Nuclear Parts Center
 Tel: 434.832.3506
 Mobile: 434.841.4878
 After Hours Phone: 434.610.3880
Lew.McKeague@areva.com

Vedat T. Ataman

Manager, UltraCheck & EMPATH Diagnostics
 Tel: 434.832.3046
 Mobile: 434.610.3414
Vedat.Ataman@areva.com

us.aveva.com



UltraCheck is a registered trademark of AREVA Inc. The data and information contained herein are provided solely for illustration and informational purposes and create no legal obligations by AREVA. None of the information or data is intended by AREVA to be a representation or a warranty of any kind, expressed or implied, and AREVA assumes no liability for the use of or reliance on any information or data disclosed in this document. ©2017 AREVA Inc. All rights reserved.