

Deposit Minimization Treatment (DMT)

A green process providing dry sludge and clean water

The Most Effective Alternative for Steam Generator (SG) Deposit Removal

AREVA's Deposit Minimization Treatment (DMT) family of products lives up to its name. A DMT may be applied with plant heat or AREVA supplied external heat allowing this cleaning technology application to be optimized for any outage schedule. The applications have demonstrated the flexibility to be applied to meet the demands of complex outage scopes and schedules. DMT has demonstrated the ability to remove over 17,500 pounds of deposits from a four loop plant. DMT is not just a cleaning process but includes a waste treatment technology which results in no liquid waste from the application. Our Chemistry and Technical Services (CTS) team is investing in the technology and resources to help prolong your steam generator life, reduce waste, and most importantly, to promote the operating efficiency of your plant.

Fast Reaction Reduces Outage Time and Provides Schedule Margin

We understand that time is money — especially during an outage. The DMT process was designed with an appreciation for ever-changing outage schedules. Steam generator work scopes often changes on the fly due to inspection findings. DMT is a relatively fast process that doesn't require an inordinate amount of residence time — the chemical reaction is fast, which reduces outage time and provides schedule margin for the flexibility you need during an outage.

An Environmentally Green Alternative Gets the Job Done Right

Our exclusive process can actually help you protect the environment. DMT applies self-inhibiting dissolution chemistry. This means that the small amount of process corrosion allows DMT to be applied multiple times within the steam generator lifetime corrosion allowance. The magnetite removed from the steam generator is reformed into a solid secondary waste with all process water becoming clean water. DMT gets the job done without generating large volumes of secondary liquid waste. This means fewer headaches for you at the end of the day.



PreDMT



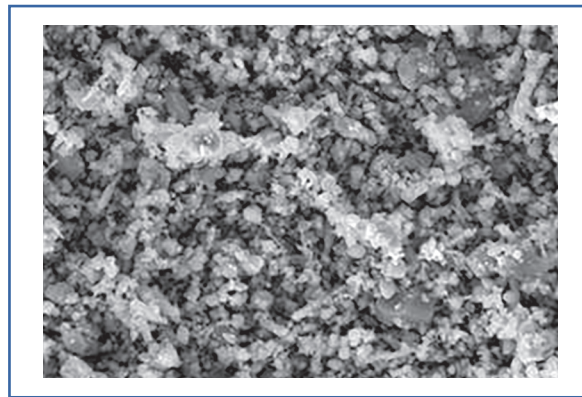
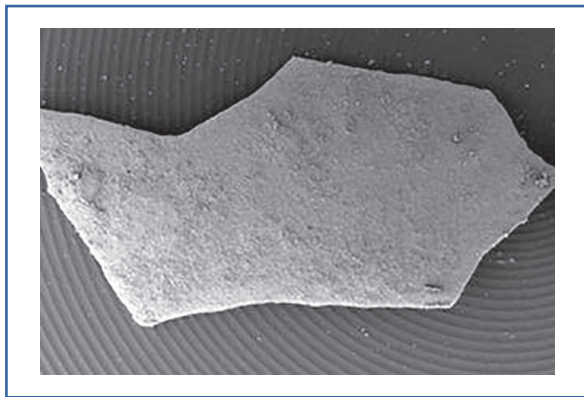
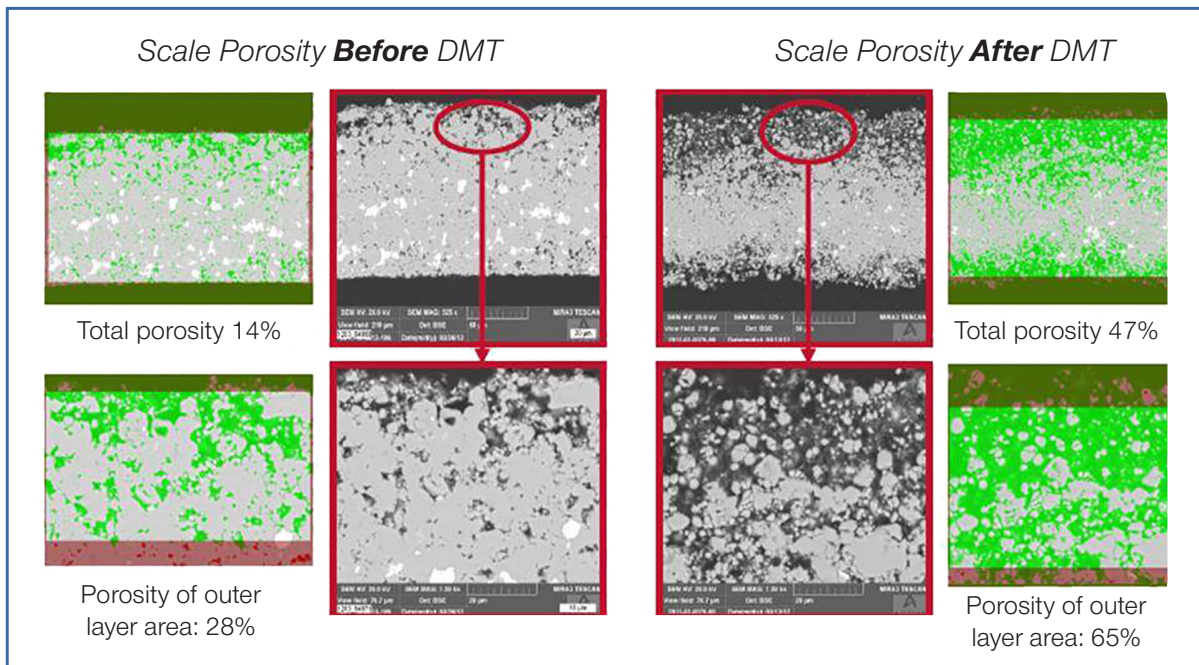
PostDMT

Features and Benefits

- Effective removal of secondary side deposits
- Prolongs SG life
- May be applied multiple times within the SG lifetime corrosion allowance
- No secondary liquid waste
- Meets the demands of complex outage scopes and schedules

DMT – Fast, Green & Effective

Evaluation of Scale Flake by SEM



Laboratory test with actual plant SG hard sludge scale flakes:

- Over 200% increase in scale porosity
- Over 25% decrease of Vicker's hardness

AREVA Inc.
Corporate Headquarters
7207 IBM Drive
Charlotte, NC 28262

For more information, contact

Robin Carey
Manager, Business Development
Tel: 434.832.3987
Robin.Carey@areva.com

AREVA Outage Control Center
Tel: 434.832.3777
Email: OCC@areva.com

us.aveva.com

The data and information contained herein are provided solely for illustration and informational purposes and create no legal obligations by AREVA. None of the information or data is intended by AREVA to be a representation or a warranty of any kind, expressed or implied, and AREVA assumes no liability for the use of or reliance on any information or data disclosed in this document. ©2017 AREVA Inc. All rights reserved.