

Self-Locking Light Weight Handling Poles



Improving SAFETY with new equipment and advanced technology.

Practical Innovation With Numerous Advantages

- Reduces tape use on the fuel floor
- Fully-tested and technician-approved
- Same technology used for heavier duty applications (i.e. cleaning, component repairs, etc.)

Features

- Enclosed integrated spring
- Ease of assembly/disassembly
- Tapeless intersections
- Positive control of pole sections during handling activities

Benefits

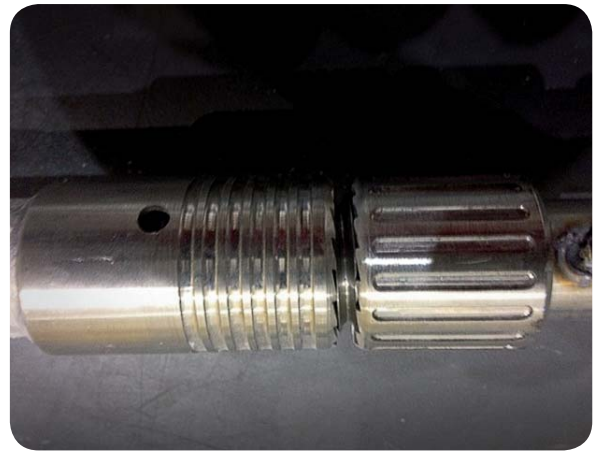
- Enclosed spring-actuated, self-locking pole intersections
- No tape required at pole intersections
- Fully tested and qualified
- Field-proven and technician-sponsored
- Reduces the potential for introduction of foreign material



AREVA's exclusive light weight poles have been tested under rigorous conditions and are technician-approved.

More Innovative Outage Services

- RCP Pump and Motor Shop and Services
- Engineering and Analysis
- Chemistry Lab Services
- PWR & BWR Refueling Services
- Safety-related Machining and Coatings
- Outage Management and OCC support



No tape is required at pole intersections.



AREVA Inc.

155 Mill Ridge Rd., Lynchburg, VA 24502

For more information, contact

John Peters

Sr. Manager of Innovation and Technology

John.Peters@areva.com

(434) 832-3077- Office (434) 841-0988 - Cell

Jim Forderkonz

Manager BWR Services

James.Forderkonz@areva.com

(434) 832-4325 - Office (434) 258-5879 - Cell

or your VP, Key Accounts:

Tel: (704) 805-2305

us.areva.com

The data and information contained herein are provided solely for illustration and informational purposes and create no legal obligations by AREVA. None of the information or data is intended by AREVA to be a representation or a warranty of any kind, expressed or implied, and AREVA assumes no liability for the use of or reliance on any information or data disclosed in this document. ©2015 AREVA Inc. All rights reserved.