

framatome

IC academy
Training Solutions 2021

IC academy

With more than 40 years of training experience, Framatome's full training portfolio includes courses on virtually every aspect of nuclear power plant construction and operation. We also design individually tailored training programs and courses to suit our customers' specific requirements. Our long-standing relationships with global experts, utilities, and institutions give us the necessary expertise to offer valuable insights into nuclear safety policy and procedures.

Our training solutions focus on:

- Certified, experienced instructors and experts in all fields of nuclear technology
- Competent advice and support regarding your intended training goals
- Practical courses with applied training on real-life systems
- Training curriculum customized to your needs
- High-quality training materials individually tailored for each course and customer

Our promise to you

Framatome offers comprehensive training solutions for the development, construction and maintenance of nuclear power plants. Our IC academy is home to world-leading experts in the industry, ready to share their know-how and experience with your operational teams. Framatome delivers the training programs you need to help you achieve your team's development goals.

Your performance

is **our** everyday **commitment**

TRAINING LOCATIONS

Framatome offers extensive system and operations training at our modern training facilities or on-site at customer locations worldwide.

 **France**

Framatome France offers instrumentation and control trainings drawn from decades of operational experience and best practices. Courses are available at Framatome sites in Lyon and Paris, as well as at actual plant sites like Flamanville. To ensure the best training for all customers, classroom and hands-on instruction are provided by our training experts.

 **Germany**

For more than 40 years Framatome has provided extensive training courses covering both nuclear plant construction and operation at our Training Center in Karlstein and Erlangen. Comprehensive instrumentation and control training is further supported by actual platforms and component mock-ups allowing participants to learn in realistic environments.



**USA**

Located in Lynchburg, Va., Framatome's Technical Training Center is located on 3.5 acres, with full-scale mock-ups, classrooms, offices, and labs to meet the growing nuclear site maintenance needs in the U.S. and around the world. Course participants receive classroom and hands-on training for plant-specific instrumentation and control configurations and new procedures in a safe, realistic environment.




**China****Slovakia**

We also offer instrumentation and control academy training courses near customer locations in China and Slovakia for our local customers in Asia and Eastern Europe. The full list of courses is continually expanding and is also available in customers' native language. Our teams of trainers look forward to welcoming you at one of the Framatome facilities, or provide training at your local facility.



FOXBORO CONTROL SOFTWARE

Advanced FoxView Software

DURATION	LOCATION	LANGUAGES
5 days	  Customer on-site / Worldwide	 English

TARGET GROUP

Plant Engineers

OBJECTIVES

- Describe the purpose and function of AIM*AT software applications.
- Operate the AIM*Historian application to monitor various process variables.
- Configure and utilize reduction groups.
- Perform AIM*Historian archiving operations.
- Access real-time and historical data in table format.
- Access real-time and historical data in trend format.
- Set up the AIM*ODBC driver and access data with the SQL Select statement.
- Access data using AIM*OPC and tools embedded in the AIM suite.
- Build and view HTML reports using AIM*Inform.
- Access and modify instances using AIM*Historian utilities.
- Configure an instance to include both events activated by user-defined conditions and MDE values.

CONTENT

This course promotes effective HMI design using advanced features in the FoxView and FoxDraw applications. These features help you build and maintain graphical displays in a Foxboro system. In this course, you use display configuration tools, substitutions, Display Manager commands (dmcmd), and various utilities. You also use FoxView displays to interact with real-time data, historical field data, and process data. The course is ideal for Process Control Engineers who build or maintain FoxDraw displays and maintain the Process Operator human interface environment.

PREREQUISITES

Course #2001v8 Foxboro Configuration Essentials

OTHER INFORMATION

This course is delivered by Schneider Electric Process Automation Learning Services.

Contact: ic-academy@framatome.com
for more information

IC academy

Organization
and information

SPECIFIC TRAINING REQUIREMENTS

Do you have specific requirements for a training course? We can put together a tailor made course. Please contact us and we will be happy to advise you.

Please email us at:

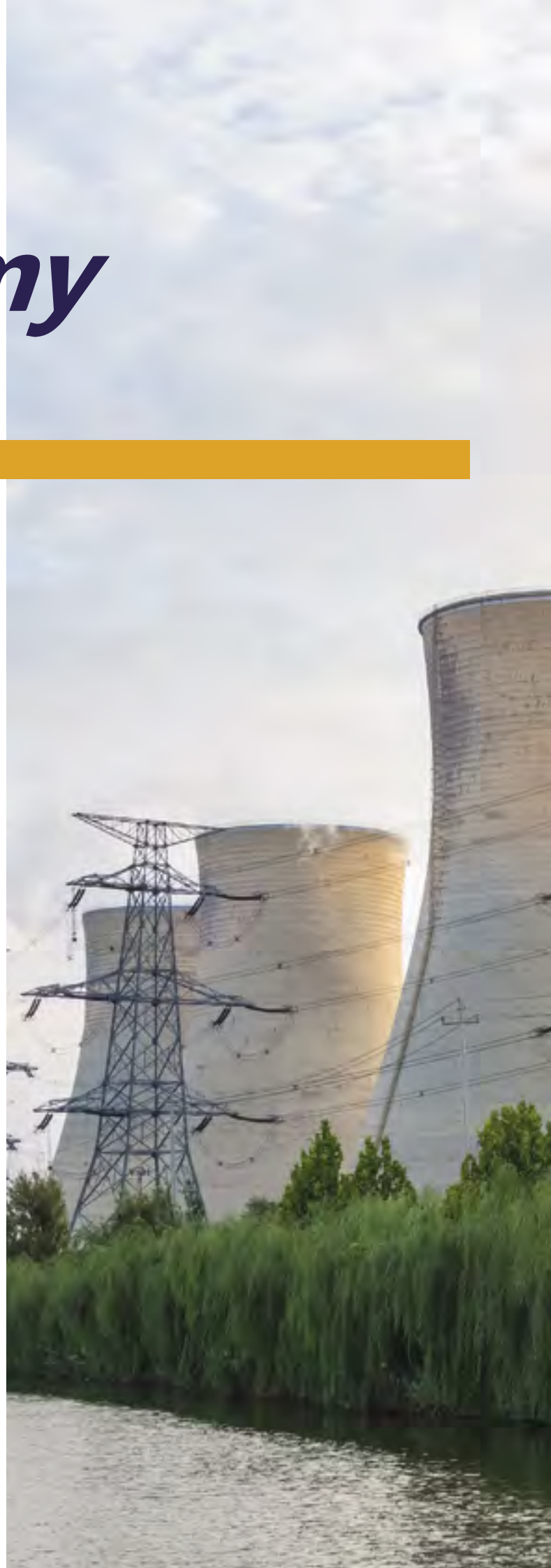
ic-academy@framatome.com

Our promise to you

Framatome offers comprehensive training solutions for the development, construction and maintenance of nuclear power plants. Our IC academy is home to world-leading experts in the industry, ready to share their know-how and experience with your operational teams. Framatome delivers the training programs you need to help you achieve your team's development goals.

Your performance

is **our** everyday **commitment**



Framatome is an international leader in nuclear energy recognized for its innovative solutions and value-added technologies for the global nuclear fleet. With worldwide expertise and a proven track record for reliability and performance, the company designs, services and installs components, fuel, and instrumentation and control systems for nuclear power plants. Its more than 14,000 employees work every day to help Framatome's customers supply ever cleaner, safer and more economical low-carbon energy.

Visit us at: www.framatome.com, and follow us on Twitter: @Framatome_ and LinkedIn: Framatome.

Framatome is owned by the EDF Group (75.5%), Mitsubishi Heavy Industries (MHI – 19.5%) and Assystem (5%).



Scan the QR code to browse our solutions by market area.

framatomē

Framatome
Tour AREVA, 1 Place Jean Millier
92400 Courbevoie, France

ic-academy@framatome.com
ic@framatome.com
www.framatome.com

© 2021 Framatome, Business Unit I&C – May 2021 – Photos copyright: © Framatome / © EDF
TELEPERM@XS is a registered trademark of Framatome or its affiliates,
in the United States or other countries