

framatome

IC academy
Training Solutions 2021

IC academy

With more than 40 years of training experience, Framatome's full training portfolio includes courses on virtually every aspect of nuclear power plant construction and operation. We also design individually tailored training programs and courses to suit our customers' specific requirements. Our long-standing relationships with global experts, utilities, and institutions give us the necessary expertise to offer valuable insights into nuclear safety policy and procedures.

Our training solutions focus on:

- Certified, experienced instructors and experts in all fields of nuclear technology
- Competent advice and support regarding your intended training goals
- Practical courses with applied training on real-life systems
- Training curriculum customized to your needs
- High-quality training materials individually tailored for each course and customer

Our promise to you

Framatome offers comprehensive training solutions for the development, construction and maintenance of nuclear power plants. Our IC academy is home to world-leading experts in the industry, ready to share their know-how and experience with your operational teams. Framatome delivers the training programs you need to help you achieve your team's development goals.

Your performance

is **our** everyday **commitment**

TRAINING LOCATIONS

Framatome offers extensive system and operations training at our modern training facilities or on-site at customer locations worldwide.

 **France**

Framatome France offers instrumentation and control trainings drawn from decades of operational experience and best practices. Courses are available at Framatome sites in Lyon and Paris, as well as at actual plant sites like Flamanville. To ensure the best training for all customers, classroom and hands-on instruction are provided by our training experts.

 **Germany**

For more than 40 years Framatome has provided extensive training courses covering both nuclear plant construction and operation at our Training Center in Karlstein and Erlangen. Comprehensive instrumentation and control training is further supported by actual platforms and component mock-ups allowing participants to learn in realistic environments.



**USA**

Located in Lynchburg, Va., Framatome's Technical Training Center is located on 3.5 acres, with full-scale mock-ups, classrooms, offices, and labs to meet the growing nuclear site maintenance needs in the U.S. and around the world. Course participants receive classroom and hands-on training for plant-specific instrumentation and control configurations and new procedures in a safe, realistic environment.



**China****Slovakia**

We also offer instrumentation and control academy training courses near customer locations in China and Slovakia for our local customers in Asia and Eastern Europe. The full list of courses is continually expanding and is also available in customers' native language. Our teams of trainers look forward to welcoming you at one of the Framatome facilities, or provide training at your local facility.



FOXBORO CONTROL SOFTWARE

Continuous Control with FoxView

DURATION	LOCATION	LANGUAGES
5 days	 Customer on-site / Worldwide	 English

TARGET GROUP

Process Control Engineers and Technicians

OBJECTIVES

- Construct and verify the operation of cascade, feedforward, ratio, multiple output, and discrete control schemes using control block parameters.
- Create a safe control strategy for operational changes.
- Enable output tracking, alarm filtering, and loop initialization using control parameters.
- Configure fieldbus modules for fail-safe operation and measurement resolution.
- Implement complex real-time calculations in control loops using advanced calculation blocks.
- Configure and test adaptive control schemes using PIDA, FBTUNE, and other control blocks.
- Use different types of control algorithms available in Foxboro DCS.

CONTENT

This course helps you become familiar with the control blocks and algorithms for designing continuous control databases using Foxboro DCS Control Editor. In this course, you focus on parameters and algorithms required for continuous control applications, such as cascade, ratio, feed-forward, and adaptive control loops. You execute complex real-time mathematical calculations at the loop level and leverage fail-safe strategies and procedures. Course topics use Control Software packages of only Control Editor (Galaxy) and Historian with FoxView as the Human/Machine Interface (HMI). Throughout the course, extensive lab sessions help you practice and test procedures. The course is ideal for Process Control Engineers and Technicians who design, install, test, or maintain control schemes using the Control Editor.

PREREQUISITES

Course #5001FV Control Software Configuration Essentials With FoxView;
Course #6211 Process Control Technology or equivalent knowledge

OTHER INFORMATION

This course is delivered by Schneider Electric Process Automation Learning Services.

Contact: ic-academy@framatome.com
for more information

IC academy

Organization
and information

SPECIFIC TRAINING REQUIREMENTS

Do you have specific requirements for a training course? We can put together a tailor made course. Please contact us and we will be happy to advise you.

Please email us at:

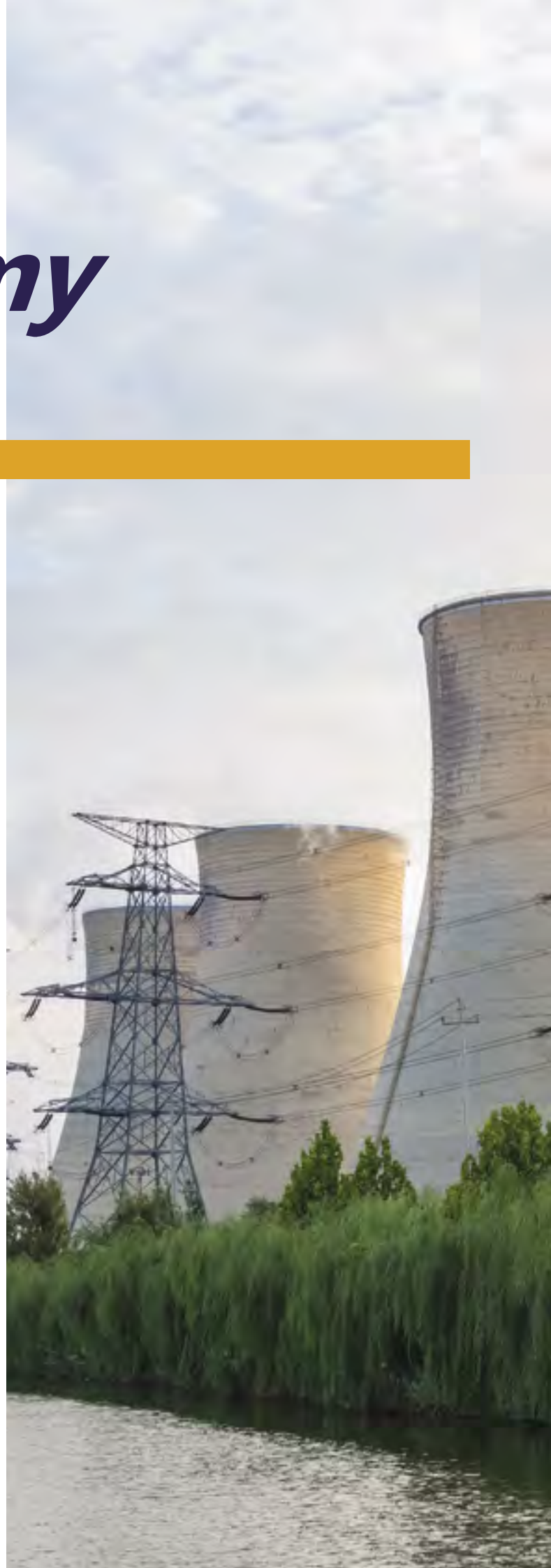
ic-academy@framatome.com

Our promise to you

Framatome offers comprehensive training solutions for the development, construction and maintenance of nuclear power plants. Our IC academy is home to world-leading experts in the industry, ready to share their know-how and experience with your operational teams. Framatome delivers the training programs you need to help you achieve your team's development goals.

Your performance

is **our** everyday **commitment**



Framatome is an international leader in nuclear energy recognized for its innovative solutions and value-added technologies for the global nuclear fleet. With worldwide expertise and a proven track record for reliability and performance, the company designs, services and installs components, fuel, and instrumentation and control systems for nuclear power plants. Its more than 14,000 employees work every day to help Framatome's customers supply ever cleaner, safer and more economical low-carbon energy.

Visit us at: www.framatome.com, and follow us on Twitter: @Framatome_ and LinkedIn: Framatome.

Framatome is owned by the EDF Group (75.5%), Mitsubishi Heavy Industries (MHI – 19.5%) and Assystem (5%).



Scan the QR code to browse our solutions by market area.

framatomē

Framatome
Tour AREVA, 1 Place Jean Millier
92400 Courbevoie, France

ic-academy@framatome.com
ic@framatome.com
www.framatome.com

© 2021 Framatome, Business Unit I&C – May 2021 – Photos copyright: © Framatome / © EDF
TELEPERM@XS is a registered trademark of Framatome or its affiliates,
in the United States or other countries