

framatome

**IC academy**  
Training Solutions 2021

# IC academy

**With more than 40 years of training experience, Framatome's full training portfolio includes courses on virtually every aspect of nuclear power plant construction and operation. We also design individually tailored training programs and courses to suit our customers' specific requirements. Our long-standing relationships with global experts, utilities, and institutions give us the necessary expertise to offer valuable insights into nuclear safety policy and procedures.**

**Our training solutions focus on:**

- Certified, experienced instructors and experts in all fields of nuclear technology
- Competent advice and support regarding your intended training goals
- Practical courses with applied training on real-life systems
- Training curriculum customized to your needs
- High-quality training materials individually tailored for each course and customer

## Our promise to you

Framatome offers comprehensive training solutions for the development, construction and maintenance of nuclear power plants. Our IC academy is home to world-leading experts in the industry, ready to share their know-how and experience with your operational teams. Framatome delivers the training programs you need to help you achieve your team's development goals.

## Your performance

is **our** everyday **commitment**

# TRAINING LOCATIONS

**Framatome offers extensive system and operations training at our modern training facilities or on-site at customer locations worldwide.**

 **France**

Framatome France offers instrumentation and control trainings drawn from decades of operational experience and best practices. Courses are available at Framatome sites in Lyon and Paris, as well as at actual plant sites like Flamanville. To ensure the best training for all customers, classroom and hands-on instruction are provided by our training experts.

 **Germany**

For more than 40 years Framatome has provided extensive training courses covering both nuclear plant construction and operation at our Training Center in Karlstein and Erlangen. Comprehensive instrumentation and control training is further supported by actual platforms and component mock-ups allowing participants to learn in realistic environments.



**USA**

Located in Lynchburg, Va., Framatome's Technical Training Center is located on 3.5 acres, with full-scale mock-ups, classrooms, offices, and labs to meet the growing nuclear site maintenance needs in the U.S. and around the world. Course participants receive classroom and hands-on training for plant-specific instrumentation and control configurations and new procedures in a safe, realistic environment.

**China****Slovakia**

We also offer instrumentation and control academy training courses near customer locations in China and Slovakia for our local customers in Asia and Eastern Europe. The full list of courses is continually expanding and is also available in customers' native language. Our teams of trainers look forward to welcoming you at one of the Framatome facilities, or provide training at your local facility.



# FOXBORO CONTROL SOFTWARE

## Secured System Administration

DURATION	LOCATION	LANGUAGES
5 days	  Customer on-site / Worldwide	 English

### TARGET GROUP

Application Engineers; Control Engineers

### OBJECTIVES

- Describe key enhancements in Foxboro system software, Version 8.8 and greater.
- Review and use the Secured Editor System Definition package.
- Perform workstation hardening on both Microsoft Windows 7 and server-class workstations.
- Review Active Directory enhancements, settings, and troubleshooting techniques.
- Save Active Directory settings from a Primary Domain Controller (PDC).
- Review procedures for Secured Edition installations of secured systems.
- Understand new software packages released with Secured Edition, the System Assessment tool, the Control Network configuration tool, and others.
- Work with functions and manipulate settings in the McAfee ePolicy console.
- Deploy McAfee Agent on client stations and review all software settings.
- Update a McAfee Virus Definition Update file using ePO.

### CONTENT

This course helps you gain experience with Foxboro Secured Edition releases. Specifically, you gain understanding of the secured setup for a Foxboro system through security management settings. Course topics address system definition, workstation hardening, all types of installation, Microsoft Active Directory modifications, and troubleshooting and recovery techniques required to meet cybersecurity standards. Course topics also address features added to the system from McAfee ePolicy Orchestrator (McAfee ePO) console, setup, and navigation.

### PREREQUISITES

Course #2001v8 Foxboro Configuration Essentials or 5001 Control Software Configuration Essentials; Minimum of 1 year of experience in process control system administration

### OTHER INFORMATION

This course is delivered by Schneider Electric Process Automation Learning Services.

Contact: [ic-academy@framatome.com](mailto:ic-academy@framatome.com)  
for more information

# IC academy

Organization  
and information

## **SPECIFIC TRAINING REQUIREMENTS**

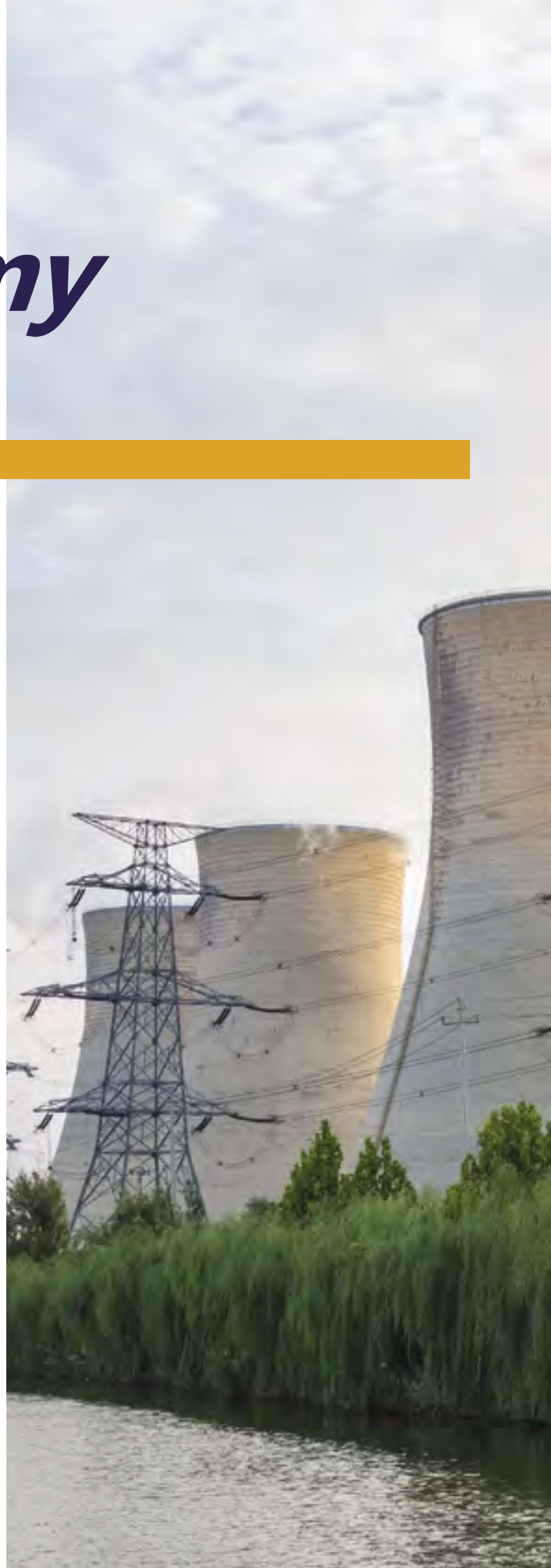
Do you have specific requirements for a training course? We can put together a tailor made course. Please contact us and we will be happy to advise you.

**Please email us at:**  
**[ic-academy@framatome.com](mailto:ic-academy@framatome.com)**

## Our promise to you

Framatome offers comprehensive training solutions for the development, construction and maintenance of nuclear power plants. Our IC academy is home to world-leading experts in the industry, ready to share their know-how and experience with your operational teams. Framatome delivers the training programs you need to help you achieve your team's development goals.

**Your performance**  
is **our** everyday **commitment**



Framatome is an international leader in nuclear energy recognized for its innovative solutions and value-added technologies for the global nuclear fleet. With worldwide expertise and a proven track record for reliability and performance, the company designs, services and installs components, fuel, and instrumentation and control systems for nuclear power plants. Its more than 14,000 employees work every day to help Framatome's customers supply ever cleaner, safer and more economical low-carbon energy.

Visit us at: [www.framatome.com](http://www.framatome.com), and follow us on Twitter: @Framatome\_ and LinkedIn: Framatome.

Framatome is owned by the EDF Group (75.5%), Mitsubishi Heavy Industries (MHI – 19.5%) and Assystem (5%).



Scan the QR code to browse our solutions by market area.

# framatomē

Framatome  
Tour AREVA, 1 Place Jean Millier  
92400 Courbevoie, France

[ic-academy@framatome.com](mailto:ic-academy@framatome.com)  
[ic@framatome.com](mailto:ic@framatome.com)  
[www.framatome.com](http://www.framatome.com)

© 2021 Framatome, Business Unit I&C – May 2021 – Photos copyright: © Framatome / © EDF  
TELEPERM@XS is a registered trademark of Framatome or its affiliates,  
in the United States or other countries