

framatome

IC academy
Training Solutions 2021

IC academy

With more than 40 years of training experience, Framatome's full training portfolio includes courses on virtually every aspect of nuclear power plant construction and operation. We also design individually tailored training programs and courses to suit our customers' specific requirements. Our long-standing relationships with global experts, utilities, and institutions give us the necessary expertise to offer valuable insights into nuclear safety policy and procedures.

Our training solutions focus on:

- Certified, experienced instructors and experts in all fields of nuclear technology
- Competent advice and support regarding your intended training goals
- Practical courses with applied training on real-life systems
- Training curriculum customized to your needs
- High-quality training materials individually tailored for each course and customer

Our promise to you

Framatome offers comprehensive training solutions for the development, construction and maintenance of nuclear power plants. Our IC academy is home to world-leading experts in the industry, ready to share their know-how and experience with your operational teams. Framatome delivers the training programs you need to help you achieve your team's development goals.

Your performance

is **our** everyday **commitment**

TRAINING LOCATIONS

Framatome offers extensive system and operations training at our modern training facilities or on-site at customer locations worldwide.

 **France**

Framatome France offers instrumentation and control trainings drawn from decades of operational experience and best practices. Courses are available at Framatome sites in Lyon and Paris, as well as at actual plant sites like Flamanville. To ensure the best training for all customers, classroom and hands-on instruction are provided by our training experts.

 **Germany**

For more than 40 years Framatome has provided extensive training courses covering both nuclear plant construction and operation at our Training Center in Karlstein and Erlangen. Comprehensive instrumentation and control training is further supported by actual platforms and component mock-ups allowing participants to learn in realistic environments.



**USA**

Located in Lynchburg, Va., Framatome's Technical Training Center is located on 3.5 acres, with full-scale mock-ups, classrooms, offices, and labs to meet the growing nuclear site maintenance needs in the U.S. and around the world. Course participants receive classroom and hands-on training for plant-specific instrumentation and control configurations and new procedures in a safe, realistic environment.



**China****Slovakia**

We also offer instrumentation and control academy training courses near customer locations in China and Slovakia for our local customers in Asia and Eastern Europe. The full list of courses is continually expanding and is also available in customers' native language. Our teams of trainers look forward to welcoming you at one of the Framatome facilities, or provide training at your local facility.



FOXBORO CONTROL SOFTWARE

Visualization Server

DURATION	LOCATION	LANGUAGES
3 days	  Customer on-site / Worldwide	 English

TARGET GROUP

Application Engineers; Control Engineers

OBJECTIVES

- Describe requirements and advantages of a virtualization server.
- Describe procedures to maintain a virtualization server and virtual images for Primary Domain Controller (PDC), the Galaxy repository, Display Server, and Historian Server.
- Describe network requirements and setup for connecting a virtualization server to the Control Network and engineering networks.
- Describe how to manage thin-client connections.
- Save and recover virtual stations using Microsoft Hyper-V tools.
- Consult all available documentation to use assigned configurators, tools, and utilities to analyze and troubleshoot the virtualization server.
- Understand endpoint protection and replication requirements using V91 documentation.
- Administrate virtualization host servers using centralized virtualization management.
- Create a replica of the virtual stations in different virtualization host servers and perform planned and unplanned failovers.
- Move virtual stations from one V91 host to another V91 host using the Hyper-V Manager Live Migration feature.

CONTENT

This course covers the use of the Microsoft Hyper-V server and the administration of virtual images. In this course, you back up and restore virtual images to the server to demonstrate the reliability and versatility of this platform. This course is ideal for Engineers who support virtualization servers and operator workstations using thin clients.

PREREQUISITES

Course #5012 Secured System Administration or equivalent knowledge; Minimum of 1 year of experience in process control administration

OTHER INFORMATION

This course is delivered by Schneider Electric Process Automation Learning Services.

Contact: ic-academy@framatome.com for more information

IC academy

Organization
and information

SPECIFIC TRAINING REQUIREMENTS

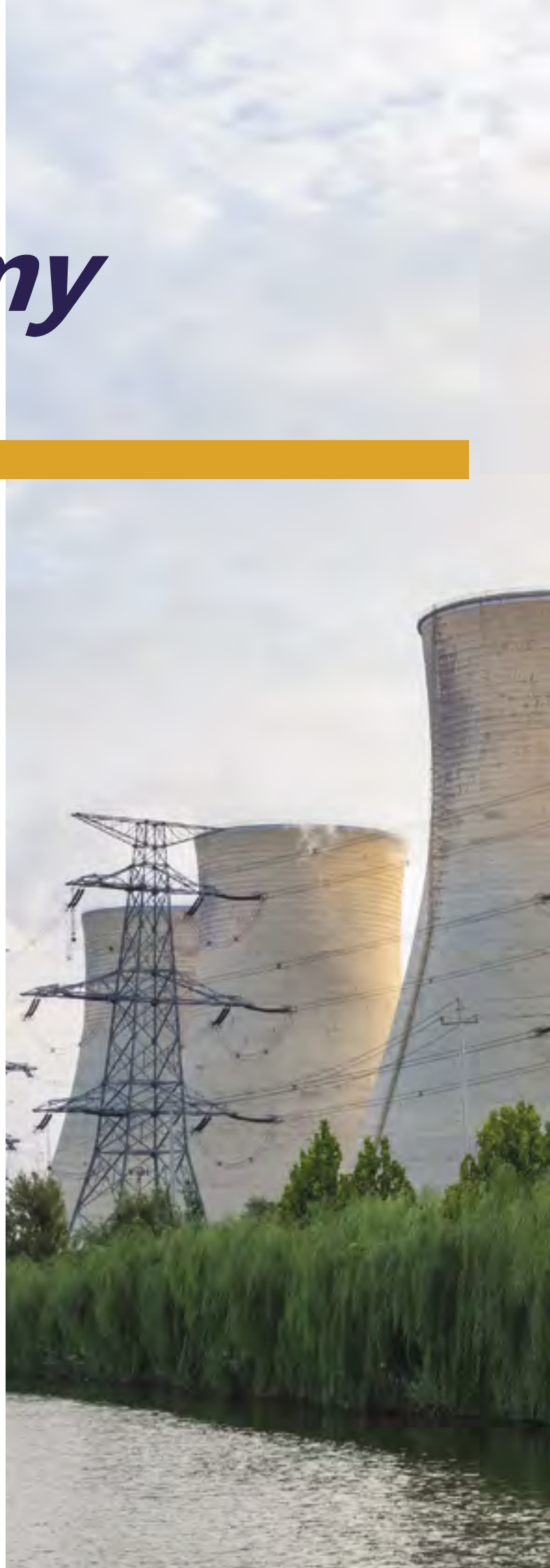
Do you have specific requirements for a training course? We can put together a tailor made course. Please contact us and we will be happy to advise you.

Please email us at:
ic-academy@framatome.com

Our promise to you

Framatome offers comprehensive training solutions for the development, construction and maintenance of nuclear power plants. Our IC academy is home to world-leading experts in the industry, ready to share their know-how and experience with your operational teams. Framatome delivers the training programs you need to help you achieve your team's development goals.

Your performance
is **our** everyday **commitment**



Framatome is an international leader in nuclear energy recognized for its innovative solutions and value-added technologies for the global nuclear fleet. With worldwide expertise and a proven track record for reliability and performance, the company designs, services and installs components, fuel, and instrumentation and control systems for nuclear power plants. Its more than 14,000 employees work every day to help Framatome's customers supply ever cleaner, safer and more economical low-carbon energy.

Visit us at: www.framatome.com, and follow us on Twitter: @Framatome_ and LinkedIn: Framatome.

Framatome is owned by the EDF Group (75.5%), Mitsubishi Heavy Industries (MHI – 19.5%) and Assystem (5%).



Scan the QR code to browse our solutions by market area.

framatomē

Framatome
Tour AREVA, 1 Place Jean Millier
92400 Courbevoie, France

ic-academy@framatome.com
ic@framatome.com
www.framatome.com

© 2021 Framatome, Business Unit I&C – May 2021 – Photos copyright: © Framatome / © EDF
TELEPERM® XS is a registered trademark of Framatome or its affiliates,
in the United States or other countries