

framatome

IC academy
Training Solutions 2021

IC academy

With more than 40 years of training experience, Framatome's full training portfolio includes courses on virtually every aspect of nuclear power plant construction and operation. We also design individually tailored training programs and courses to suit our customers' specific requirements. Our long-standing relationships with global experts, utilities, and institutions give us the necessary expertise to offer valuable insights into nuclear safety policy and procedures.

Our training solutions focus on:

- Certified, experienced instructors and experts in all fields of nuclear technology
- Competent advice and support regarding your intended training goals
- Practical courses with applied training on real-life systems
- Training curriculum customized to your needs
- High-quality training materials individually tailored for each course and customer

Our promise to you

Framatome offers comprehensive training solutions for the development, construction and maintenance of nuclear power plants. Our IC academy is home to world-leading experts in the industry, ready to share their know-how and experience with your operational teams. Framatome delivers the training programs you need to help you achieve your team's development goals.

Your performance

is **our** everyday **commitment**

TRAINING LOCATIONS

Framatome offers extensive system and operations training at our modern training facilities or on-site at customer locations worldwide.

 **France**

Framatome France offers instrumentation and control trainings drawn from decades of operational experience and best practices. Courses are available at Framatome sites in Lyon and Paris, as well as at actual plant sites like Flamanville. To ensure the best training for all customers, classroom and hands-on instruction are provided by our training experts.

 **Germany**

For more than 40 years Framatome has provided extensive training courses covering both nuclear plant construction and operation at our Training Center in Karlstein and Erlangen. Comprehensive instrumentation and control training is further supported by actual platforms and component mock-ups allowing participants to learn in realistic environments.



**USA**

Located in Lynchburg, Va., Framatome's Technical Training Center is located on 3.5 acres, with full-scale mock-ups, classrooms, offices, and labs to meet the growing nuclear site maintenance needs in the U.S. and around the world. Course participants receive classroom and hands-on training for plant-specific instrumentation and control configurations and new procedures in a safe, realistic environment.

**China****Slovakia**

We also offer instrumentation and control academy training courses near customer locations in China and Slovakia for our local customers in Asia and Eastern Europe. The full list of courses is continually expanding and is also available in customers' native language. Our teams of trainers look forward to welcoming you at one of the Framatome facilities, or provide training at your local facility.



SVDU MAINTENANCE

DURATION	LOCATION	LANGUAGES
5 days	  Customer on-site / Worldwide	 English

TARGET GROUP

SVDU Maintenance Engineers

OBJECTIVES

To provide practical knowledge and experience with maintaining an SVDU installation, including:

- Setup, Connecting, Installing, Upgrading and Replacing SVDUs
- System Administrative Tasks
- Predictive and Preventive Maintenance Functions
- Troubleshooting and Reporting-Hardware, Software, Graphics
- Determining Normal vs. Abnormal Operation
- System Health Monitoring – Hardware, Software
- System Safety and Security

CONTENT

The 5-day course progresses through the ACCIS overview, 1E SVDU platform and architecture, QNX OS, laptop utilities, software installation, and touchscreen calibration. The runtime applications, annunciation databases, alarm event data flows, SVDU startup, Tricon I/O Driver, System Health Monitoring, HSI Display Builder tool and template verification tool, verification of runtime operation. Hardware/software troubleshooting, and system maintenance, system security.

Hands-on: Set up Laptops - Wireless & Tools, Lab Setup, QNX OS-Commands & Utilities, QNX Photon, Networks, Full Software Installation, Touchscreen Calibration, Filesystems, ACCIS Commands & Utilities, Online Database Utilities, QNX and ACCIS Startup, System Health Monitoring, Add a point to Tricon and SVDU display, Verify Configuration, Install Updated Data, Diagnosing system issues, Copying System Logs & Archives, Debugging Graphics, Add, Remove, Replace SVDU Nodes, Time synchronization, Process and Disk Auditor, QNX root password, ACCIS user accounts, HSI User Login.

PREREQUISITES

Knowledge of Process and Flow Control, Tricon, QNX, SVDU (Safety Video Display Unit)

OTHER INFORMATION

This course requires the SVDU unit(s) and Tricon configuration for hands-on experience and skills development; 2 students per lab setup.

Contact: ic-academy@framatome.com
for more information

IC academy

Organization
and information

SPECIFIC TRAINING REQUIREMENTS

Do you have specific requirements for a training course? We can put together a tailor made course. Please contact us and we will be happy to advise you.

Please email us at:

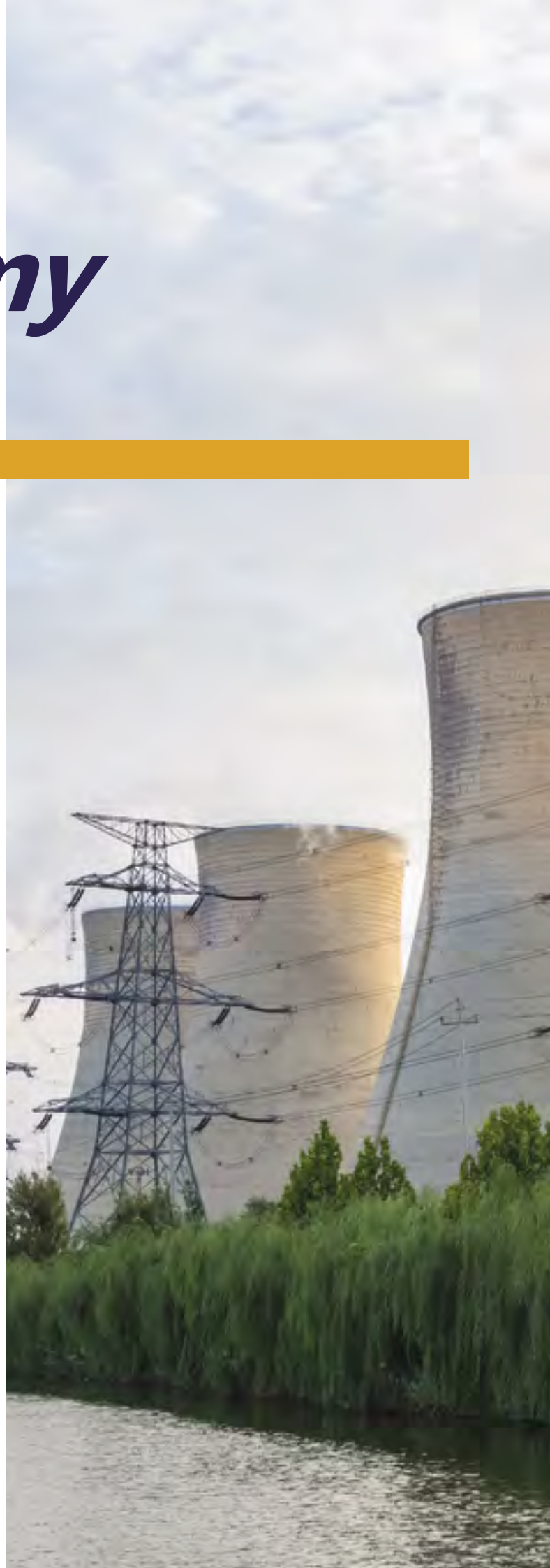
ic-academy@framatome.com

Our promise to you

Framatome offers comprehensive training solutions for the development, construction and maintenance of nuclear power plants. Our IC academy is home to world-leading experts in the industry, ready to share their know-how and experience with your operational teams. Framatome delivers the training programs you need to help you achieve your team's development goals.

Your performance

is **our** everyday **commitment**



Framatome is an international leader in nuclear energy recognized for its innovative solutions and value-added technologies for the global nuclear fleet. With worldwide expertise and a proven track record for reliability and performance, the company designs, services and installs components, fuel, and instrumentation and control systems for nuclear power plants. Its more than 14,000 employees work every day to help Framatome's customers supply ever cleaner, safer and more economical low-carbon energy.

Visit us at: www.framatome.com, and follow us on Twitter: @Framatome_ and LinkedIn: Framatome.

Framatome is owned by the EDF Group (75.5%), Mitsubishi Heavy Industries (MHI – 19.5%) and Assystem (5%).



Scan the QR code to browse our solutions by market area.

framatomē

Framatome
Tour AREVA, 1 Place Jean Millier
92400 Courbevoie, France

ic-academy@framatome.com
ic@framatome.com
www.framatome.com

© 2021 Framatome, Business Unit I&C – May 2021 – Photos copyright: © Framatome / © EDF
TELEPERM® XS is a registered trademark of Framatome or its affiliates,
in the United States or other countries