

EDG Product Line

Emergency Diesel Generator Solution for Nuclear Power Plants

Emergency Diesel Generator (EDG) Solution and associated I&C ensure nuclear plant safety in the event of a station black-out by integrating the best vendor components into a fully nuclear-qualified system.

Challenge

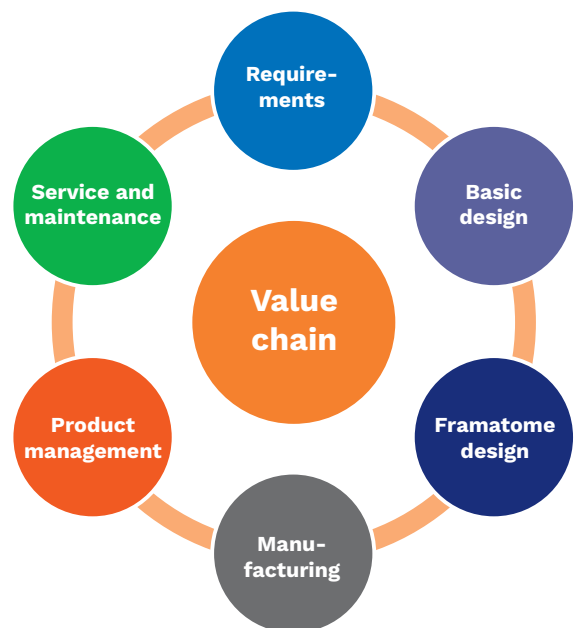
EDGs are of vital importance for the safety of plants. Authorities pay special attention to EDGs which are included in highest safety classes.

The long-term reliability and availability of EDGs requires a robust system design which is proven to be fail-safe. The EDGs have modern technologies that are straightforward and economic to operate and maintain.

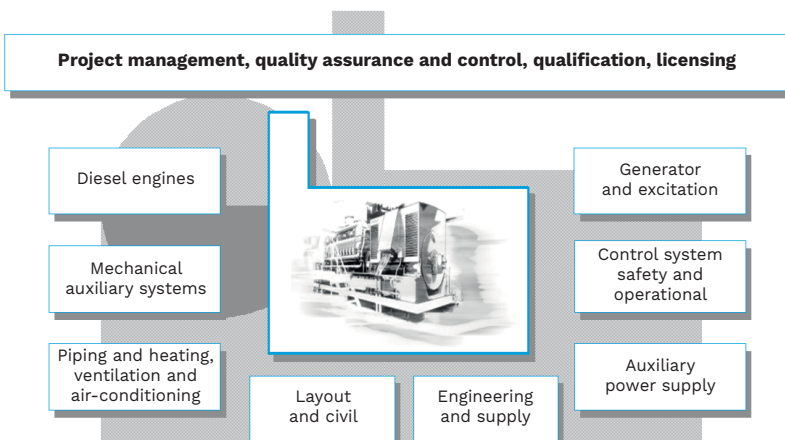
Solution

Emergency Diesel Generator Solutions and associated I&C provide a qualified customized package and ensure nuclear plant safety in the event of a station black-out by integrating them into a fully nuclear-qualified system.

OEM-independent EDG system packages for fixed installation purposes in nuclear power plants (NPPs) are available in various power output ranges, starting at few kVA up to 10 MW and beyond. The EDG concept can be applied for different infrastructures by modular interfaces and various configurations, e.g. power plants, hospitals, airports, railways, database...



Diesel generators for emergency and for station black Framatome integral organized EDG Product Line covers the entire value chain



Diesel generators for emergency and for station black out: "a plant within the plant"

Customer benefits

- Maintain plant safety in the event of a station black out
- Ensure optimal component selection
- Simplify component integration with pre-qualified auxiliary systems
- Reduce costs for plant-specific qualification
- Reduces costs of maintenance and obsolescence
- Customized solutions as independent from Engine/Generator manufacturer

Your performance
is **our** everyday **commitment**

Technical information

Framatome roles:

- Overall EPC (Engineering, Procurement, Construction) contractor
- Integrator of EDG systems
- Supplier of systems and individual components

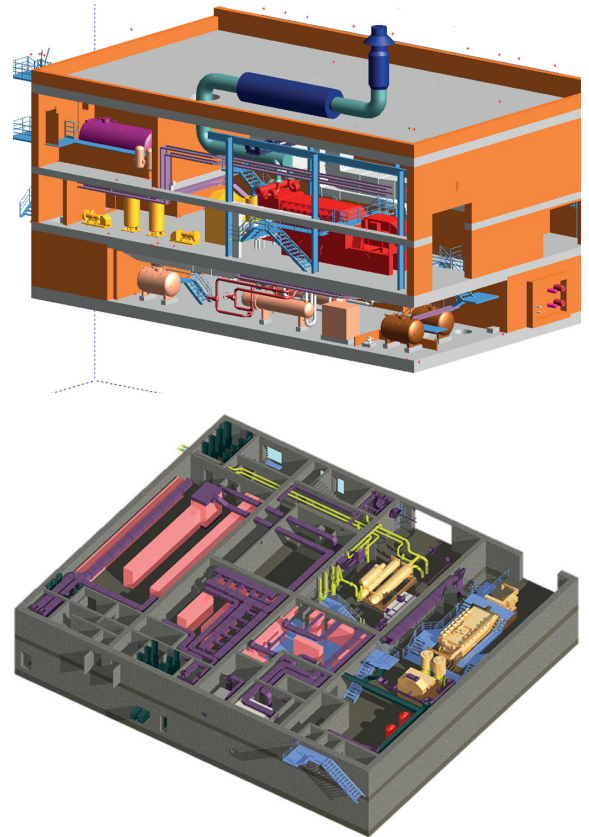
EDG Systems features:

- Modular Analogous Excitation System (MAEX)
- Electrical Protection and Synchronization
- Integrated Digital Safety Control for EDGs
- Operational Control
- Online Monitoring
- EDG Maintenance and Service
- Hardened Emergency Diesel Generators
- Independent Containerized Station Blackout (SBO) EDGs
- Suitable for all major international reactor lines
- Fulfill all major applicable regulations (such as IEEE, RCC-E, KTA).

Practical Experience

Framatome is a specialist for EDG systems and has a reference basis of more than 300 installed systems. Furthermore, Framatome develops dedicated own pre-qualified EDG products for electrical system and instrumentation and control (I&C) such as TELEPERM® XS digital safety I&C, analog safety I&C (ADCON-S), digital operational I&C (ADCON-O) or fully analogous excitation (MAEX) and control technology.

A dedicated EDG product line with integrated product development, proposal management and project execution based on experienced teams ensures a thorough, high-quality delivery of our solutions.



Generic EDG Building in power class above 6 MW

Key figures

1 – 10 MW power range

> 300 projects world-wide in all kind of reactors

> 5 subsupplier for engine & generator (each) ensures the best ecological and economical solution

References EDG Systems

Country	Year	Scope
German Fleet – Germany	1960 - 1988	Complete EDG Systems for all KWU Plants New Built
Borssele – Netherlands	1969	Complete EDG System New Built
Goesgen – Switzerland	1980	Complete EDG System New Built
Angra 2 – Brazil	1982	Complete EDG System New Built
Philippsburg 1 – Germany	2000	Complete EDG System Modernization
Doel – Belgium	2007	Complete EDG System Modernization non OEM Plant
Atucha 1 – Argentina	2010	Complete EDG System Modernization
Oskarsham – Sweden	2013	Complete EDG System Modernization non OEM Plant
Taishan 1+2 – China	2013	Complete EDG System New Built
OL3 – Finland	2014	Complete EDG System New Built
Tianwan – China	2016	Complete EDG System New Built non OEM Plant

Contact: EDG@framatome.com
www.framatome.com

It is prohibited to reproduce the present publication in its entirety or partially in whatever form without prior written consent. Legal action may be taken against any infringer and/or any person breaching the aforementioned prohibitions.

Subject to change without notice, errors excepted. Illustrations may differ from the original. The statements and information contained in this publication are for advertising purposes only and do not constitute an offer of contract. They shall neither be construed as a guarantee of quality or durability, nor as warranties of merchantability or fitness for a particular purpose. All statements, even those pertaining to future events, are based on information available to us at the date of publication. Only the terms of individual contracts shall be authoritative for type, scope and characteristics of our products and services.