

Mobile Mechanized Ultrasonic Testing of Wheel Set Axles with a Longitudinal Drill

Fulfillment of high safety requirements for rail vehicles

Challenge

The requirements for rail vehicles are very demanding: it is essential that they operate safe, dependably and reliably despite increasing cost pressure, continuous maintenance and repairs. Specifically for smaller fleet vehicles, investing in complex inspection techniques or specialized personnel is usually not economical.

Solution

Therefore, Framatome Qualicon has mobilized the examination of wheel set axles. The mobile ultrasonic inspection system, developed by GMH Prüftechnik GmbH, makes it possible to test wheel set axles in an installed, assembled or unassembled state. This includes the following longitudinal drills:

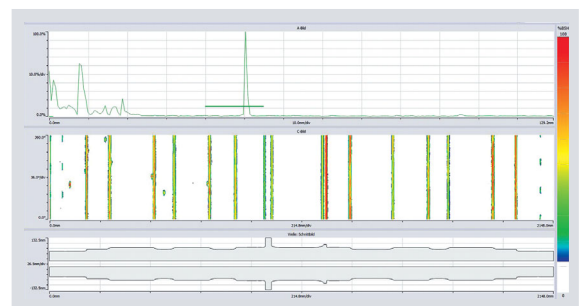
- diameter 30 mm
- diameter 40 mm to 60 mm
- diameter 60 mm to 90 mm.

Customer benefits

- Inspection in mounted condition saves time and costs
- High testing reliability
- Rapid re-availability of rail vehicles
- Reproducible results due to data acquisition and a high level of positioning precision



Mobile ultrasonic inspection system



Screen shot of an inspection run in the evaluation software

Your performance
is **our** everyday **commitment**

Technical information

Drawings of axles and the respective outlines are scanned into the software using the DXF files. It ensures a reliable assessment and evaluation of geometric indications. The mobility of this system makes inspections at different locations within a maintenance center or at various other sites possible. A rapid re-availability of the rail vehicles is provided by the fast performance of the examination. Data gained during the mechanized ultrasonic inspection is saved and therefore reproducible at any time. A customer-specific database is used to manage documentation, inspection results and ultrasonic data, if needed.



Loading of the mobile ultrasonic inspection system

Qualicon

is an accredited inspection laboratory in accordance to DIN EN ISO/IEC 17025. The accreditation is valid for plants and mechanical engineering as well as aerospace and traffic technology. The non-destructive testing specialists are qualified and certified in the field of railway maintenance in accordance to DIN EN ISO 9712.

Contact: examination@framatom.com
www.framatome.com

It is prohibited to reproduce the present publication in its entirety or partially in whatever form without prior written consent. Legal action may be taken against any infringer and/or any person breaching the aforementioned prohibitions.

Subject to change without notice, errors excepted. Illustrations may differ from the original. The statements and information contained in this publication are for advertising purposes only and do not constitute an offer of contract. They shall neither be construed as a guarantee of quality or durability, nor as warranties of merchantability or fitness for a particular purpose. All statements, even those pertaining to future events, are based on information available to us at the date of publication. Only the terms of individual contracts shall be authoritative for type, scope and characteristics of our products and services.