

Core Monitoring System for Nuclear Power Plants

On-line core monitoring for safe and efficient plant operation

Challenge

The nuclear industry is facing more demanding safety requirements and increasing competition from other energy sources, both of which increase the pressure on reactors to operate more economically with the highest levels of safety. The key drivers targeting cost reduction and improved operations include accurate predictions, operational automation and operational flexibility. In responding to these industry challenges, key nuclear reactor core parameters need to be constantly monitored to ensure the highest levels of safety are maintained while supporting flexible and lowest cost operations.

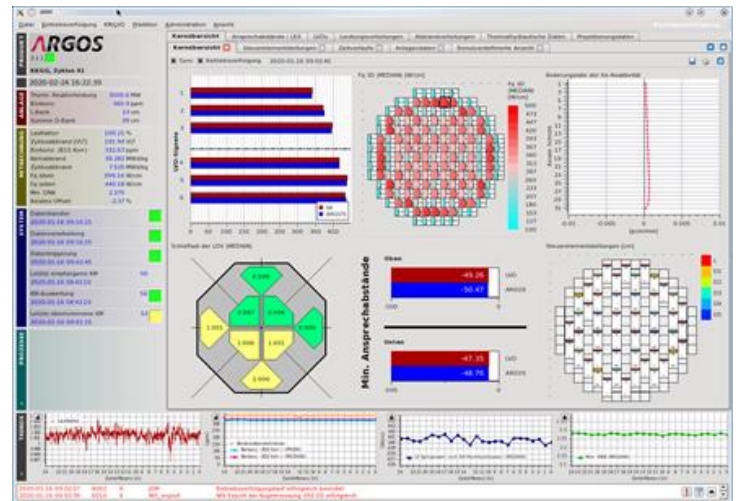


Fig. 1: Users can easily configure the ARGOS GUI according to their individual needs

Solution

To help reactor operators meet these demands, Framatome has developed ARGOS. This core monitoring system provides greater insight into the state of the core through calculations and comparisons with online measurement of key parameters. These calculations include shut-down margin, critical condition predictions and core follow calculations, which assist operations in maintaining the highest levels of safety and flexibility.

ARGOS also helps reactor operators with flexible operations through a configurable graphical user interface that is adaptable to various reference measurement systems and can be coupled to different neutronic simulators.

Through automation of many of the ARGOS calculations and their high level of accuracy, reactor operations will benefit from time savings and error reduction, which helps drive down operating costs.

Customer benefits

- Continuous margin control and visible operating limits
- Increased operating flexibility
- Decreased time to return to full power
- Lower operating costs by reducing boron processing through optimized power maneuvers
- Easy planning of more efficient load follow maneuvers
- Improved ergonomics through flexibly configurable GUI interface
- Offer a fleet-wide solution with common look and feel, independent of the core simulator or power reconstruction methodology

Your performance
is **our** everyday **commitment**

Technical information

- Process flux trace data from various measurement systems
- Various proven flux and power reconstruction methodologies available
- Ex-core/in-core detector calibration support
- Automatic on-line core follow calculations with core parameter trending and monitoring of thermal limits
- Configurable reporting for plant operators
- Isotopic tracking

Any calculation the core simulator is capable of, such as:

- Estimated critical conditions
- Shutdown boron concentrations
- Shut-down margin
- Predictive core calculations in the adaptive and non-adaptive mode
- Flux mapping for steady state conditions
- Flux mapping based on accurate time and power dependent xenon calculations for operational transients
- Reactivity monitoring

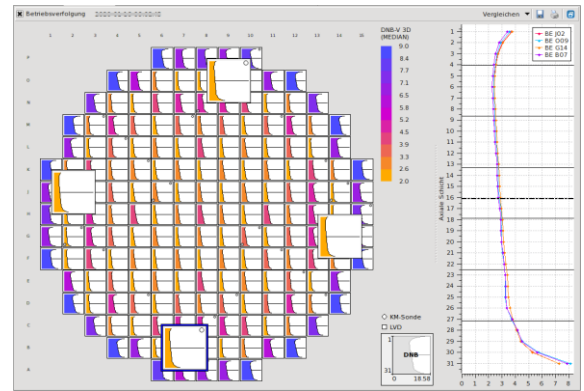


Fig. 2: Detailed information on the current status of the core available, e.g. 3 D DNB description

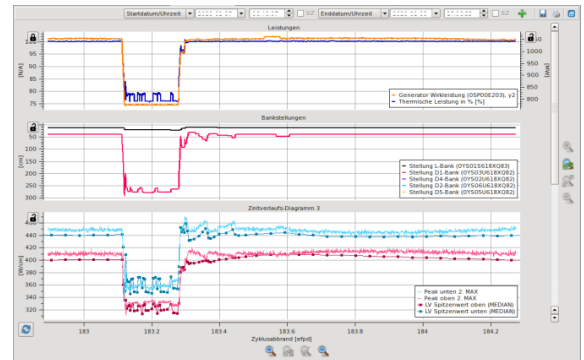


Fig. 3: accurate transient description capability

Key figures

- In parallel operation since 2016
- Successfully implemented as official core monitoring system since 2019
- Can be adapted to all nuclear power plants

References

Framatome has more than 40 years of global experience in core design and core monitoring for a variety of pressurized and boiling water reactors. The ARGOS development is based on the experience feedback from the operation of Framatome's current core Monitoring systems: POWERTRAX, POWERTRAX/S, FIDMS, POWERPLEX, and FNR-K.

The proven accuracy and robust performance of ARGOS efficiently supports plant operators in optimizing short-term and long-term cycle Operating projections.

Contact : sales-fuel@framatome.com
www.framatome.com

ARGOS, POWERTRAX and POWERPLEX are trademarks or registered trademarks of Framatome or its affiliates, in the USA or other countries.

It is prohibited to reproduce the present publication in its entirety or partially in whatever form without prior written consent. Legal action may be taken against any infringer and/or any person breaching the aforementioned prohibitions.

Subject to change without notice, errors excepted. Illustrations may differ from the original. The statements and information contained in this publication are for advertising purposes only and do not constitute an offer of contract. They shall neither be construed as a guarantee of quality or durability, nor as warranties of merchantability or fitness for a particular purpose. All statements, even those pertaining to future events, are based on information available to us at the date of publication. Only the terms of individual contracts shall be authoritative for type, scope and characteristics of our products and services.