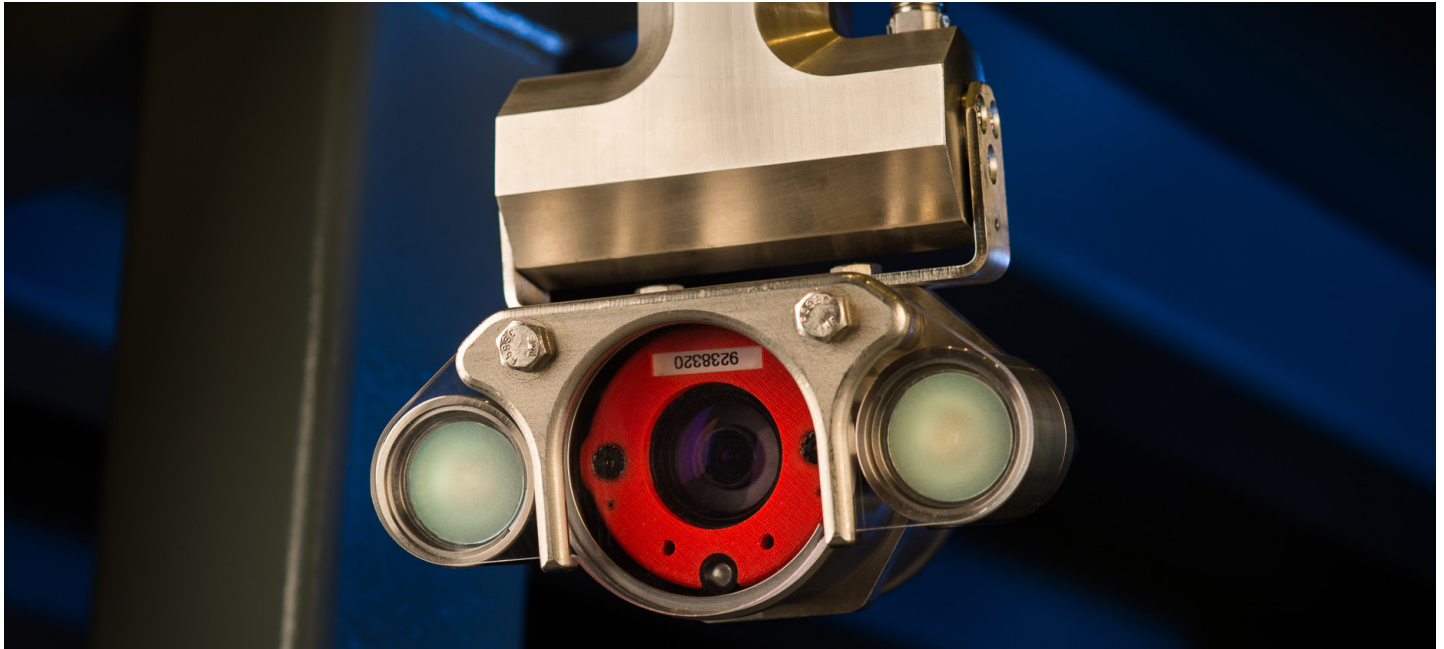


framatome

Stereoscopic Ruler



Improved outage planning with reduced dose

Every Innovation Has a Mission

One of utilities' top priorities in the 21st century is securing their operational excellence. Tangible results that ensure safety, quality, performance, and delivery are paramount. Your teams can count on Framatome to deliver innovative solutions that:

- Reduce cost
- Reduce critical path time
- Reduce overall dose
- Increase task safety and efficiency
- Resolve emergent issues quickly
- Improve plant performance

Framatome Stereoscopic Ruler

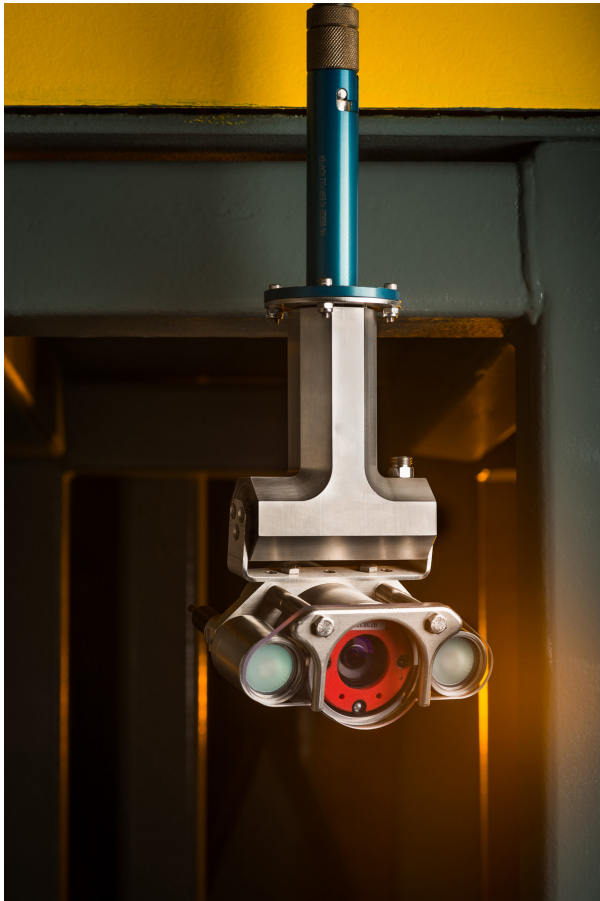
The Framatome Stereoscopic Ruler (FSR) allows for easy and quick flaw measurement without a ruler or comparison. Mounted to a typical visual inspection camera, the FSR uses a laser and two stereoscopic cameras to measure the distance to the subject and exact angle to the surface.

With the FSR utilities have an improved inspection method and can more quickly determine if outage scope will be expanded. The result? Reduced time needed for flaw measurement and characterization, reducing outage schedule impact and overall dose.

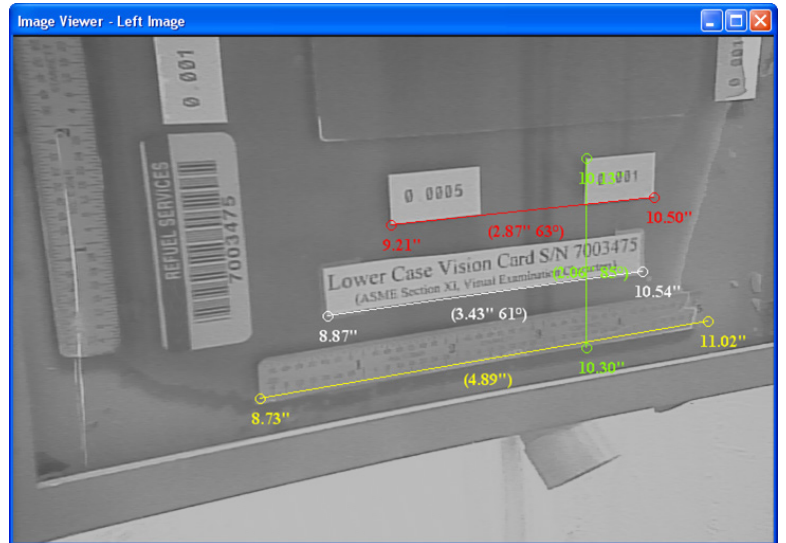
Features & Benefits

- 3-D measurements at any angle
- Accurate to one-tenth of an inch at a distance of 12 inches
- Reduced schedule on flaw measurement characterization over existing means
- Reduced dose and improved quality
- Quicker determination of expanded scope

Your performance
is **our** everyday **commitment**



No need to re-evaluate indication
with antiquated equipment



Contact:
outage@framatome.com

www.framatome.com

The data and information contained herein are provided solely for illustration and informational purposes and create no legal obligations by Framatome Inc. None of the information or data is intended by Framatome Inc. to be a representation or a warranty of any kind, expressed or implied, and Framatome Inc. assumes no liability for the use of or reliance on any information or data disclosed in this document. © 2019 Framatome Inc. All rights reserved. PS_US_577_ENG_2-19

framatome****