

## Root Cause Analyses, Metallography, Component Metallography

We offer fast and competent support during operation and outage but also for individual problems regarding root cause analyses, material-related testing and customized improvement process concepts.

### Challenge

You are looking for comprehensive assistance for solving material-related problems regarding inspection, manufacturing, repair and alteration work?

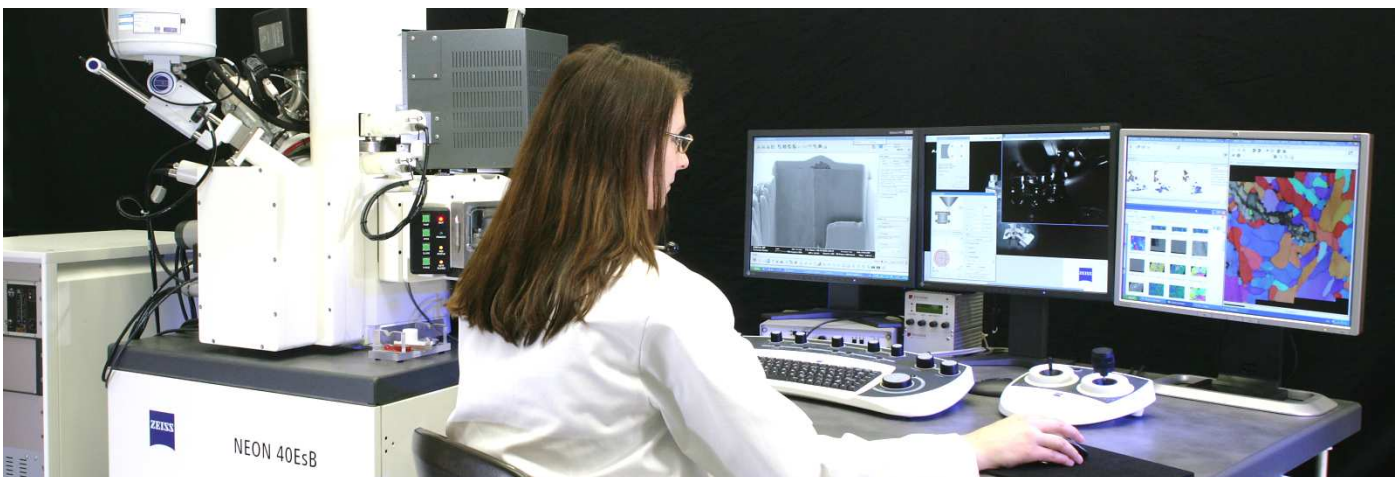
### Solution

Framatome's Technical Center offers competent contact persons for the planning and execution of orders at any time, for example:

- Long-term or ad-hoc deployment of on-site teams including material testing personnel and/or materials engineers for on-site evaluations
- Organization of shipment of parts
- Performance and documentation of failure analyses on active or non-active parts
- Development of interdisciplinary approaches and remedial actions
- Presentation of results in the presence of an independent third party and/or licensing authority if required

### Customer benefits

- Fast response time and flexible service possibilities thanks to existing infrastructure
- Broad range of examination methods for precise results
- Obtain reliable remedial actions through our internationally acknowledged experts in different areas and long-time experience especially in the field of power plant technology



**Your performance**  
is **our** everyday **commitment**

## Technical information

Our main services:

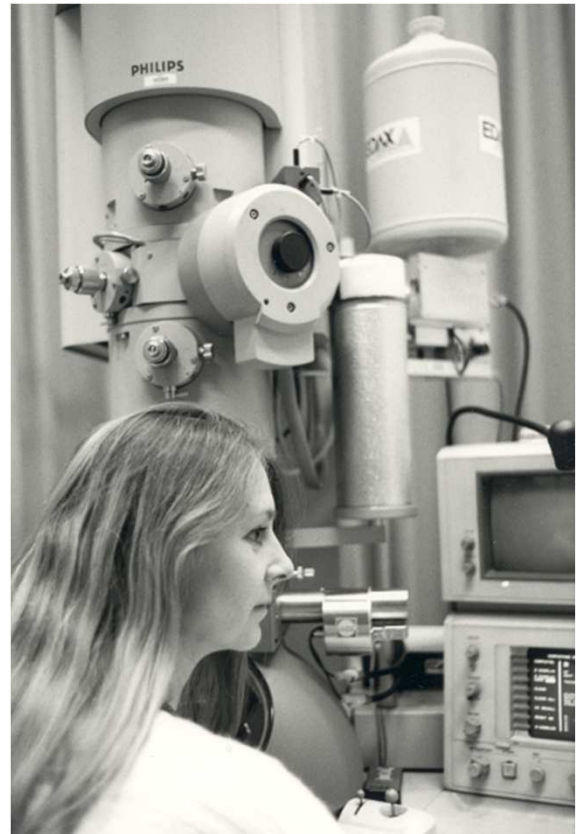
- Root cause analyses
- Ambulant metallography
- Positive material identification
- Metallographic/ceramographic Investigation
- Fracture surface investigations
- Surface analyses (topography, roughness, contour)
- Micro structure assessment (creep damage, aging, thermal heat treatment)
- Analysis of deposits and particles
- Phase and texture analyses
- Preparation of 3.1, 3.2 certificates
- Assessment of production test coupons
- Assistance for material-related and analytic problems
- X-ray residual stress measurement (mobile and stationary)

Process and methods are accredited according to DIN EN ISO/IEC 17025 \*)

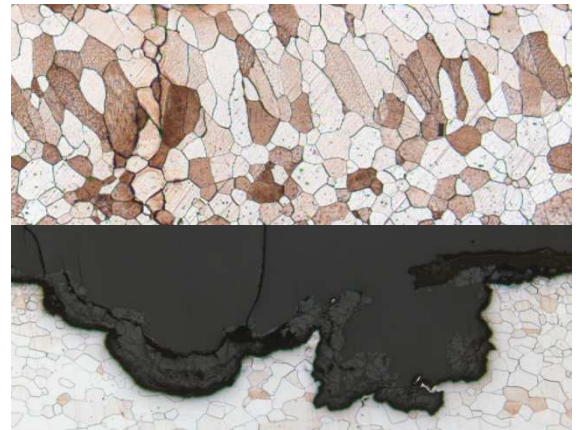


Deutsche  
Akkreditierungsstelle  
D-PL-21039-03-00

\*) the accreditation is valid only for the scope as listed in appendix of certificate D-PL-21039-03-00  
see also <https://www.dakks.de/en/content/directory-accredited-bodies-0>



Scanning electron microscope



Metallography

## Key figures

About **350** root cause analyses per year

**1/3** of these performed ad-hoc

Contact : [materials@framatom.com](mailto:materials@framatom.com)  
[www.framatom.com](http://www.framatom.com)

It is prohibited to reproduce the present publication in its entirety or partially in whatever form without prior written consent. Legal action may be taken against any infringer and/or any person breaching the afore mentioned prohibitions.

Subject to change without notice, errors excepted. Illustrations may differ from the original. The statements and information contained in this publication are for advertising purposes only and do not constitute an offer of contract. They shall neither be construed as a guarantee of quality or durability, nor as warranties of merchantability or fitness for a particular purpose. All statements, even those pertaining to future events, are based on information available to us at the date of publication. Only the terms of individual contracts shall be authoritative for type, scope and characteristics of our products and services.