

Innovative Lining Solutions

For Buried Piping and Component Applications

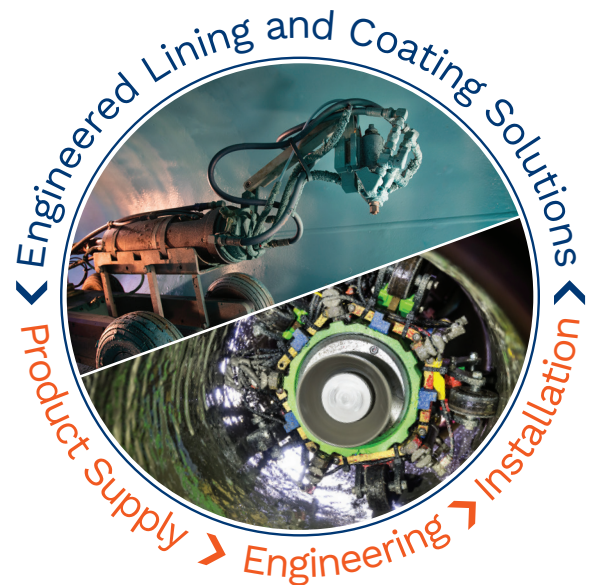
Robotic applications of liner and coating solutions from Framatome enable you to reduce safety risks and maintenance costs through remote delivery to a wide range of pipe sizes and configurations, while rehabilitating degraded assets for the remaining life of the plant.

Challenge

Buried piping and plant infrastructure are aging and degrading. As plants extend operation, solutions are required to effectively and efficiently rehabilitate these components.

Solution

Our cutting-edge polyurea spray-in-place liners provide full rehabilitation, both for degradation protection and structural solutions. Application approaches employ fast curing, spray-in-place liners and coatings utilized for raw service water piping, fire protection piping, intake structures and tanks. Use of robotic piping application technology allows for remote delivery to a wide range of pipe sizes and configurations, helping to significantly reduce manpower and confined space requirements. These robotic technologies can be customized and engineered to suit a wide array of applications. Our liner solutions are sprayed in place seamlessly, delivering consistent thicknesses with no loss of functionality. This innovative solution, supported by extensive engineering analysis and qualification testing, provides an alternative to full excavation. Resulting fast track installations mean minimal system outage durations, putting you back in service as soon as 24 hours after liner application, expediting project completion and delivering cost savings.



Customer benefits

- Robotic installation reduces excavation and safety risks
- Fast application process, minimizes downtime
- Fast-cure, allowing for return to service within 24 hours
- Specialized application engineering solutions possible
- Full-scale rehabilitation, from degradation protection to fully structural solutions

Manual Component Applications



Tank Foundations



Technical Specifications

Spray-in-place polyurea liner

- Structural capacity provides standalone replacement system
 - no reliance on host pipe.
- Supports high ring stress and pipe loading
- Near immediate gel times (< 5 seconds)
- 24 hour full cure
- Environmentally approved for use in potable/raw water systems

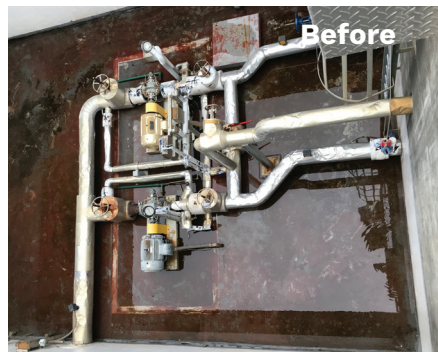
Spin cast application (8 to 36 inches)

- Reaches up to 400 feet within piping, depending on configuration
- Navigates around 45/90 degree elbow/tee joints including vertical runs

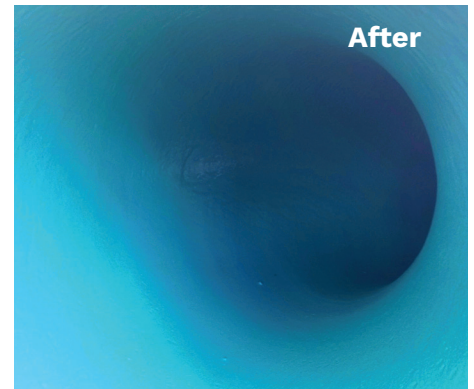
Orbital spray application (> 36 inch)

- Reaches up to 1,000 feet within piping, depending on configuration
- Adjustable equipment adapts to piping configuration

Concrete Structures



Buried Piping



Scan to see all our solutions at
www.framatome.com/solutions



Contact: outage@framatome.com
www.framatome.com

Your performance
is **our everyday commitment**

The data and information contained herein are provided solely for illustration and informational purposes and create no legal obligations by Framatome. None of the information or data is intended by Framatome to be a representation or a warranty of any kind, expressed or implied, and Framatome assumes no liability for the use of or reliance on any information or data disclosed in this document. Property of Framatome or its affiliates. © 2023 Framatome Inc. All rights reserved. PS_US_774_ENG_10-23